

ST1 Series Tubular Ceramic Capacitor



Features

- Suppress EMI
- Various capacitance
- Small size with various dimensions

Applications

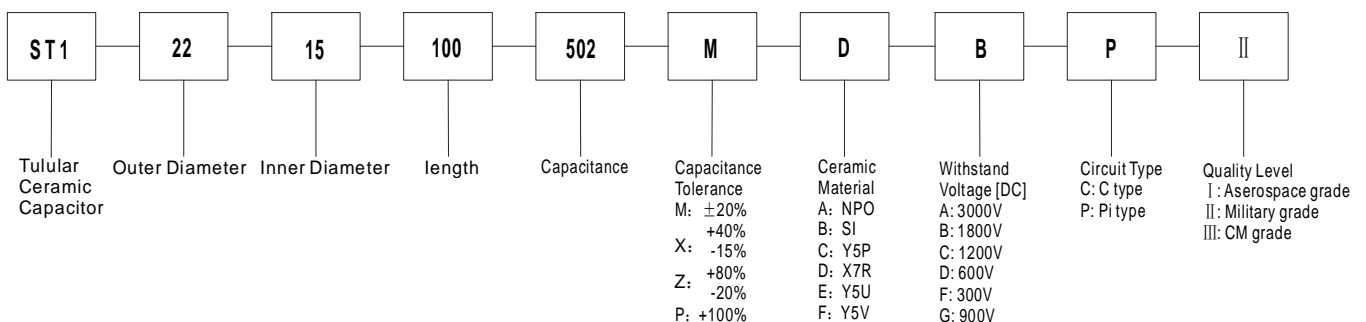
- Filter connector
- Tubular filter array

Specifications & Environment Condition

Tgδ	≤ 0.035
Circuit type	C and Pi
Relative humidity	98% @+40 °C
Isolation resistance	≥ 5000MΩ (DC)
Rated voltage	100 – 2000V (DC)
Crash	acceleration up to 40g
Atmospheric pressure	up to 1Kpa (7.5mmHg)
Temperature	-55 °C ~ +85 °C, -30 °C ~ +85 °C
Vibration	acceleration 15g @10-2000Hz
Capacitance	1 – 20000pF (custom is acceptable)

Model naming example

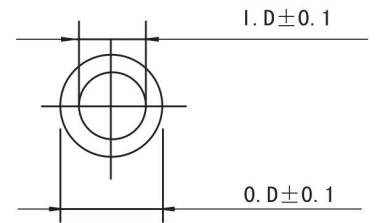
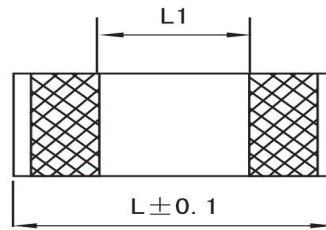
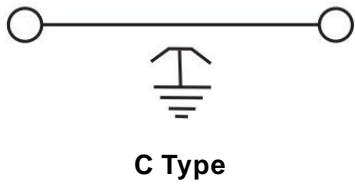
Example: ST1-2.2×1.5×10.0-502MDCP II



Note: Rated Voltage

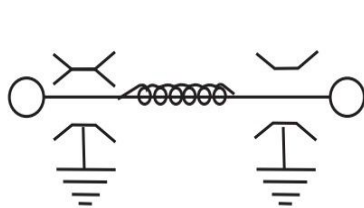
A. Working Voltage: 2000V(DC)	Withstand Voltage: 3000V(DC)	B. Working Voltage: 1000V(DC)	Withstand Voltage: 1800V(DC)
C. Working Voltage: 600V(DC)	Withstand Voltage: 1200V(DC)	D. Working Voltage: 200V(DC)	Withstand Voltage: 600V(DC)
E. Working Voltage: 100V(DC)	Withstand Voltage: 300V(DC)	F. Working Voltage: 300V(DC)	Withstand Voltage: 900V(DC)

Order information for C type

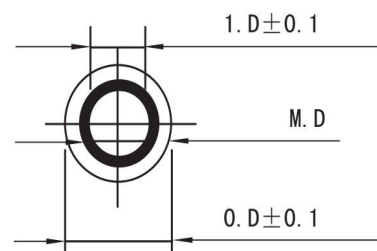
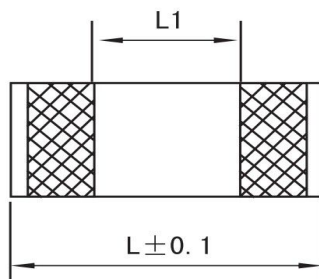


Item	Part Number	Capacitance	Circuit Type	Dimension			
				0.D	1.D	L	L1
1	ST1-1106042××××××	5~3600	C	1.1	0.6	4.2	≥2.0
2	ST1-1106055××××××	5~5600	C	1.1	0.6	5.5	≥2.5
3	ST1-1408542××××××	5~3600	C	1.4	0.85	4.2	≥2.0
4	ST1-1408560××××××	5~5600	C	1.4	0.85	6.0	≥2.5
5	ST1-1509042××××××	5~2700	C	1.5	0.9	4.2	≥2.0
6	ST1-1509055××××××	5~3300	C	1.5	0.9	5.5	≥2.5
7	ST1-1509060××××××	5~3600	C	1.5	0.9	6.0	≥2.5
8	ST1-1611042××××××	5~3900	C	1.6	1.1	4.2	≥2.0
9	ST1-1611055××××××	5~5600	C	1.6	1.1	5.5	≥2.5
10	ST1-1611060××××××	10~5600	C	1.6	1.1	6.0	≥2.5
11	ST1-1812060××××××	10~5600	C	1.8	1.2	6.0	≥2.5
12	ST1-1812080××××××	10~8000	C	1.8	1.2	8.0	≥2.5
13	ST1-1812100××××××	10~10000	C	1.8	1.2	10.0	≥3
14	ST1-1911042××××××	10~9000	C	1.9	1.1	4.2	≥2.0
15	ST1-1911060××××××	10~3600	C	1.9	1.1	6.0	≥2.5
16	ST1-1911080××××××	10~4700	C	1.9	1.1	8.0	≥3
17	ST1-1911100××××××	10~5600	C	1.9	1.1	10.0	≥3.0
18	ST1-2013042××××××	10~6800	C	2.0	1.3	4.2	≥2.0
19	ST1-2013060××××××	10~3300	C	2.0	1.3	6.0	≥2.5
20	ST1-2013080××××××	10~5600	C	2.0	1.3	8.0	≥3.0
21	ST1-2215042××××××	10~6600	C	2.2	1.5	4.2	≥2.0
22	ST1-2215060××××××	10~3900	C	2.2	1.5	6.0	≥2.5
23	ST1-2215080××××××	10~5600	C	2.2	1.5	8.0	≥3
24	ST1-2215100××××××	10~1000	C	2.2	1.5	10.0	≥3
25	ST1-2515080××××××	10~5600	C	2.5	1.5	8.0	≥3
26	ST1-2515100××××××	10~8200	C	2.5	1.5	10.0	≥3
27	ST1-2515114××××××	10~10000	C	2.5	1.8	11.4	≥3
28	ST1-2518080××××××	10~8200	C	2.5	1.8	8.0	≥3
29	ST1-2518100××××××	10~10000	C	2.5	1.8	10.0	≥3
30	ST1-2518114××××××	10~1200	C	2.5	1.8	11.4	≥3
31	ST1-3022080××××××	10~8200	C	3.0	2.2	8.0	≥3
32	ST1-3022100××××××	10~10000	C	3.0	2.2	10.0	≥3
33	ST1-3022114××××××	10~10000	C	3.0	2.2	11.4	≥3
34	ST1-3627100××××××	10~12000	C	3.6	2.7	10.0	≥3
35	ST1-3627125××××××	10~20000	C	3.6	2.7	12.5	≥3
36	ST1-4031100××××××	10~16000	C	4.0	3.1	10.0	≥3
37	ST1-4232080××××××	10~12000	C	4.2	3.2	8.0	≥3
38	ST1-4232100××××××	10~16000	C	4.2	3.2	10.0	≥3
39	ST1-4232114××××××	10~10000	C	4.2	3.2	11.4	≥3

Order information for Pi type



π Type



Item	Part Number	Capacitance	Circuit Type	Dimension			
				0.D	1.D	L	L1
1	ST1-1812060××××××	10~5600	Pi	1.8	1.2	6	≥2.5
2	ST1-1812080××××××	10~6800	Pi	1.8	1.2	8.0	≥3.0
3	ST1-1912060××××××	10~6800	Pi	1.8	1.2	8.0	≥3.0
4	ST1-1912100××××××	10~8200	Pi	1.8	1.2	10.0	≥3.0
5	ST1-2013060××××××	10~5600	Pi	2.0	1.3	6	≥2.5
6	ST1-2215080××××××	10~7500	Pi	2.2	1.5	8	≥3.0
7	ST1-2215100××××××	10~10000	Pi	2.2	1.5	10	≥3.0
8	ST1-2515080××××××	10~5600	Pi	2.5	1.5	8.0	≥3.0
9	ST1-2515100××××××	10~6800	Pi	2.5	1.5	10.0	≥3.0
10	ST1-2518080××××××	10~8200	Pi	2.5	1.8	8	≥3.0
11	ST1-2518100××××××	10~10000	Pi	2.5	1.8	10	≥3.0
12	ST1-3022100××××××	10~10000	Pi	3.0	2.2	10	≥3.0
13	ST1-3022114××××××	10~15000	Pi	3.0	2.2	11.4	≥3.0
14	ST1-3627100××××××	10~15000	Pi	3.6	2.7	10.0	≥3.0
15	ST1-3627125××××××	10~15000	Pi	3.6	2.7	12.5	≥3.0

Chengdu Shieldtechnic Co., Ltd.

Tel: +86-28-86241506

Tax: +86-86690878-807

Web: www.shieldtechnic.com